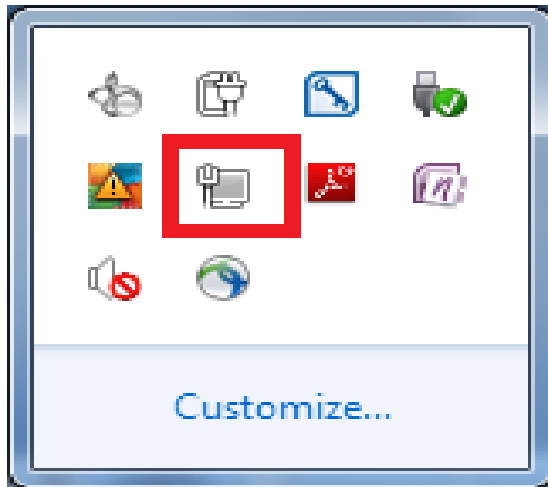


Configuring Windows 7 for the new wireless network

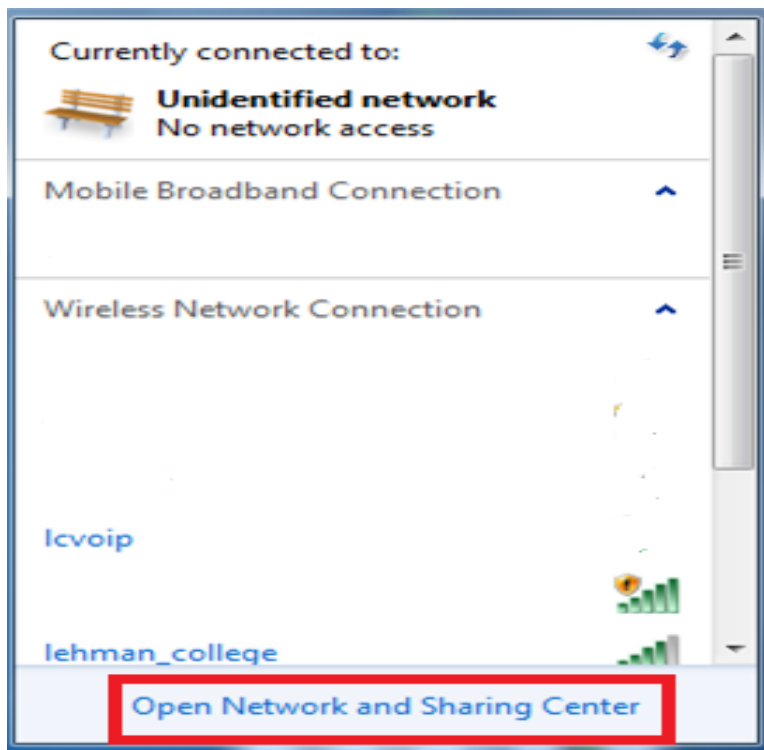
From the task bar select the “show hidden icon” button.



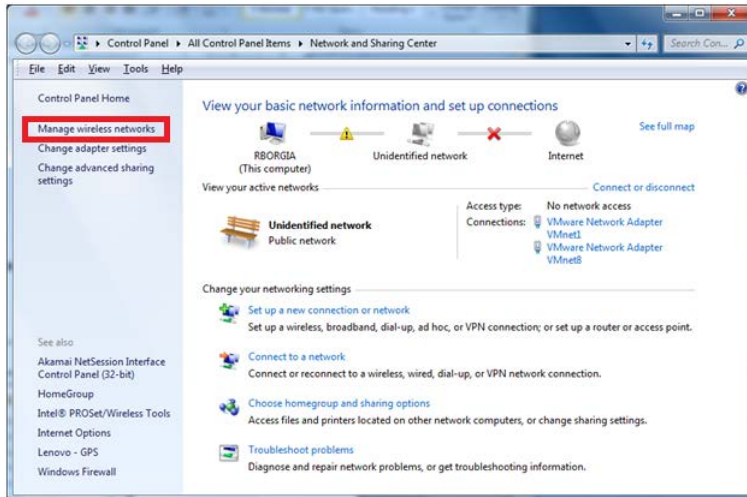
Select the *Network Icon*



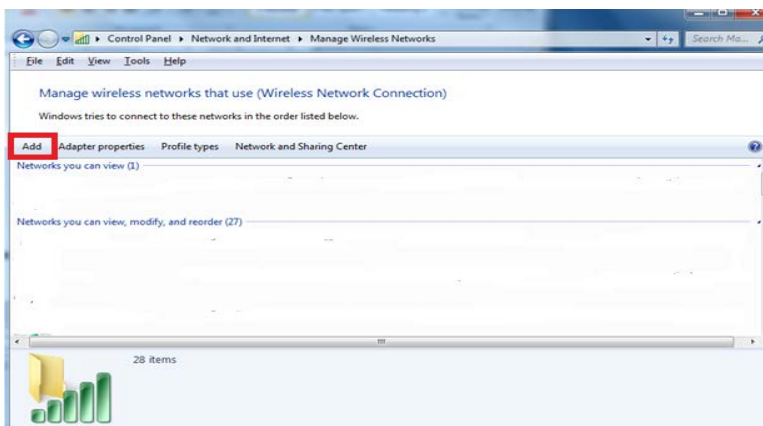
Click on “*Open Network and Sharing Center*” at the bottom of the window.



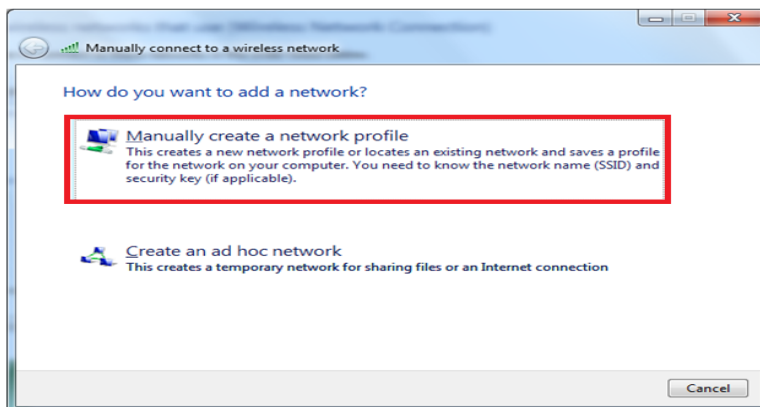
Click on ***“Manage wireless networks”*** from the menu on the left side of the screen.



Select ***“Add”***



Select ***“Manually create a network profile”***



Fill in the following (as shown):

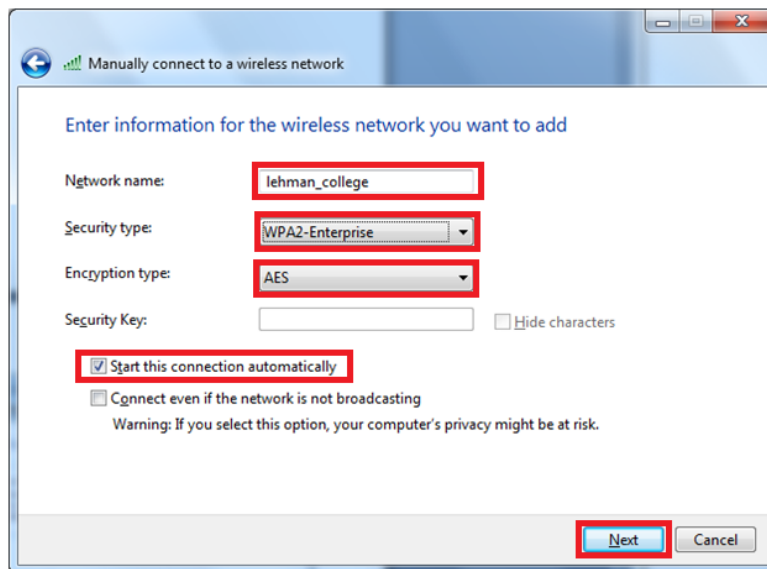
Network name: **lehman_college**

Security type: **WPA2-Enterprise**

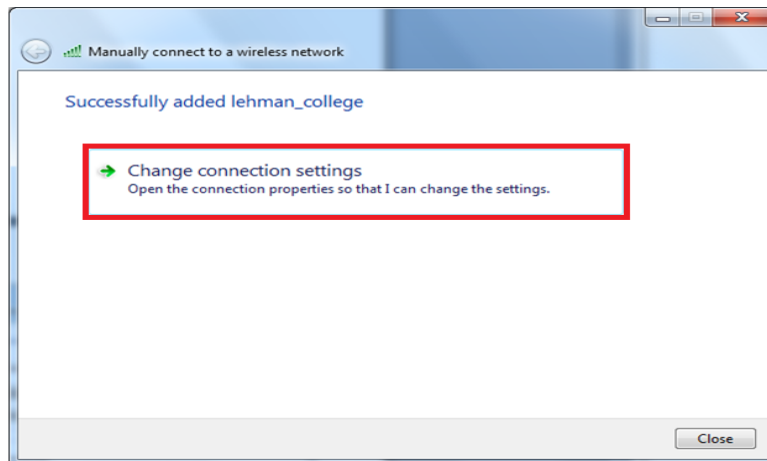
Encryption: **AES**

Check the box for “*Start this connection automatically*”

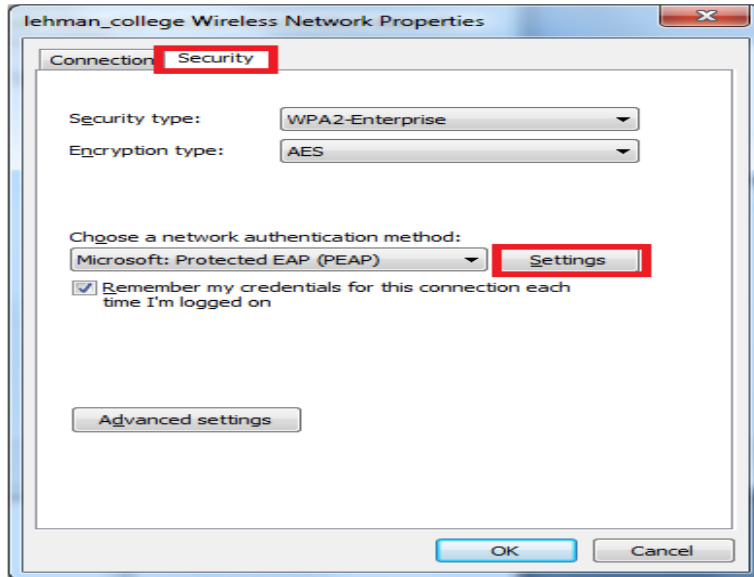
Click “*Next*”



Click on “*Change connection settings*”

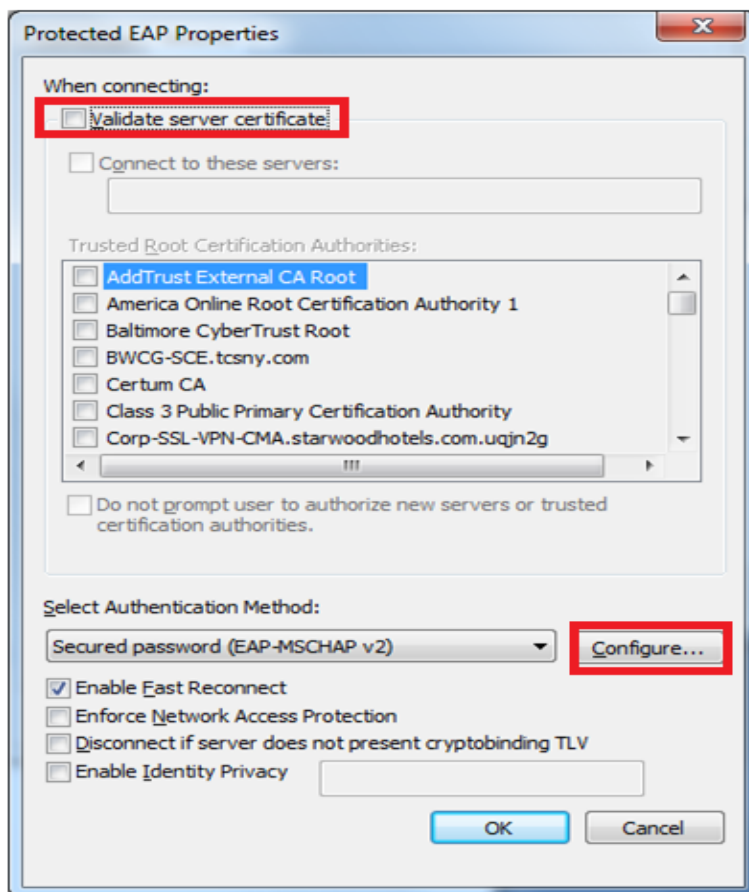


Click the security tab at the top of the page and then select the “*Settings*” button in the center-right of the window.

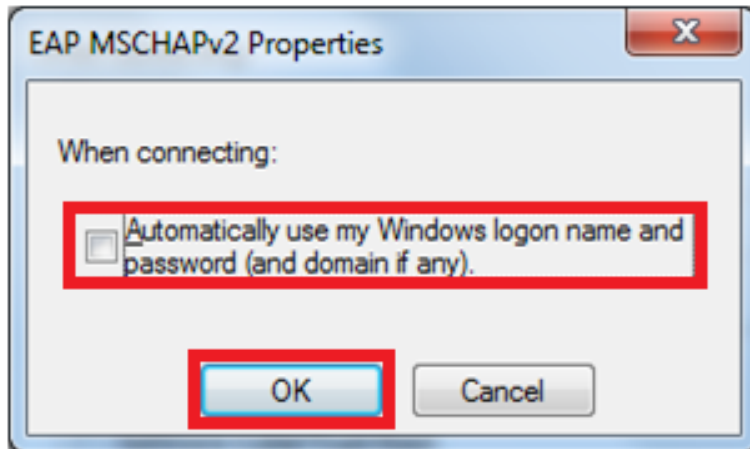


Uncheck the “*Validate server certificate*” box at the top of the screen.

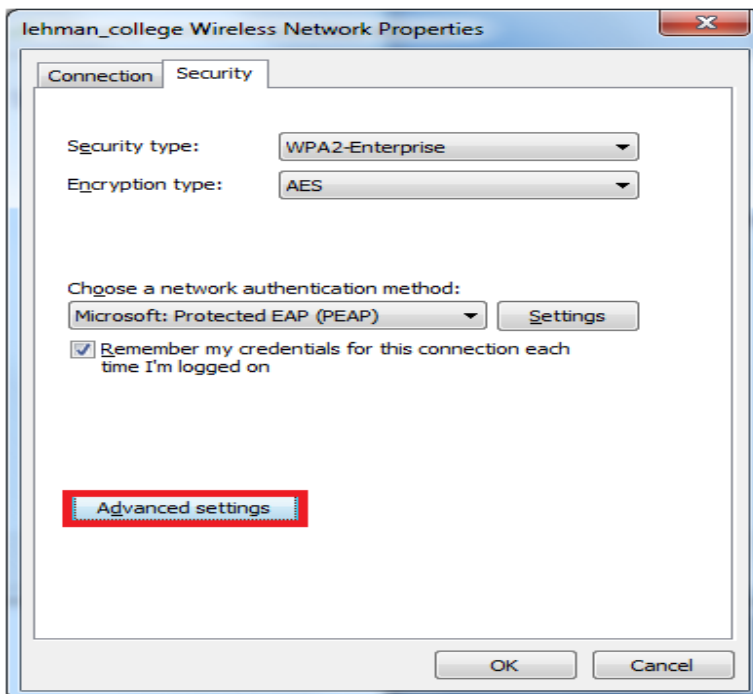
Select “*Configure*” in the lower right corner.



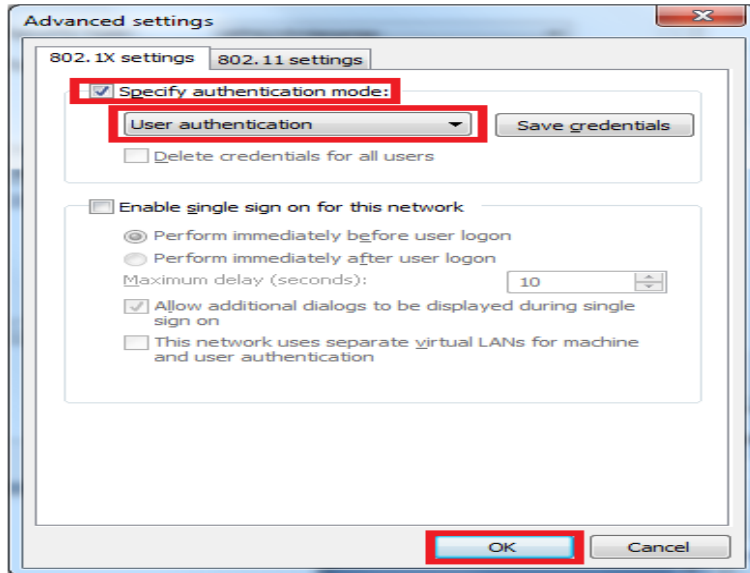
Uncheck the “*Automatically use my windows logon name and password*”
Click “*OK*”



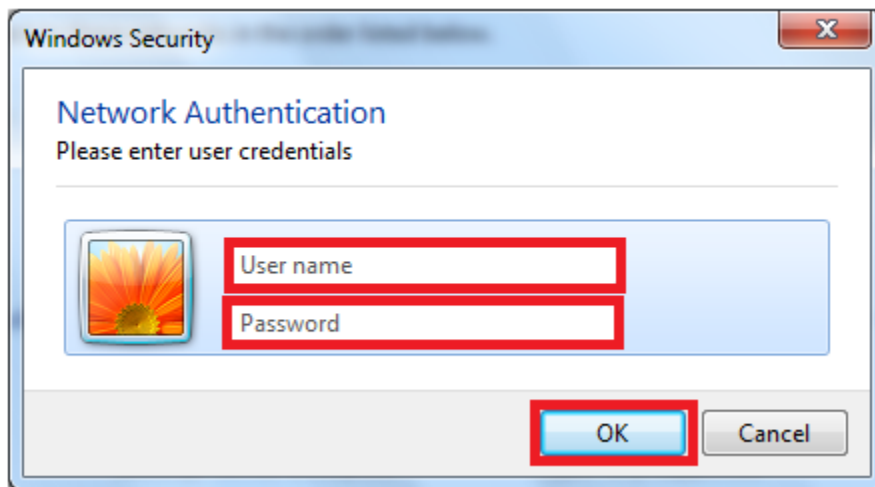
Select the “*Advanced Settings*” button.



Place a check in the “*Specify authentication mode*” box
Click on the drop down menu and select “*User authentication*” and “*OK*”



Enter your **Lehman ID Username and Password** and click **“OK”**



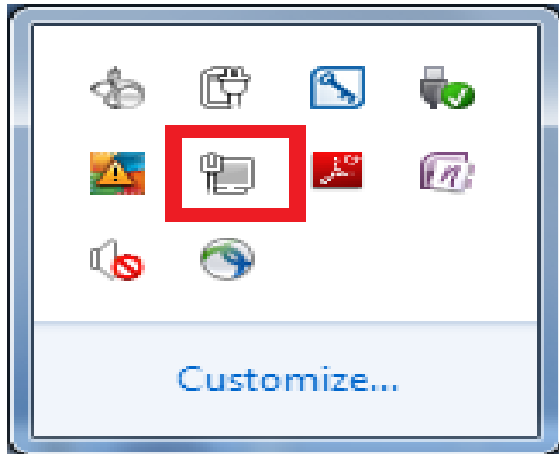
Your Windows 7 computer is now connected to the wireless network

To reconnect at a later time

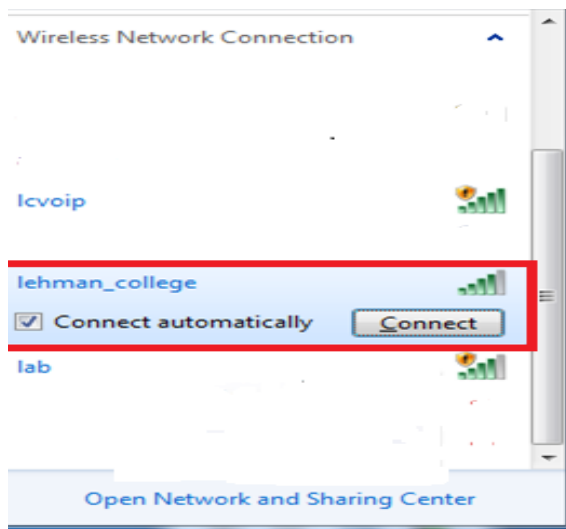
From the task bar select the **“show hidden icon”** button.



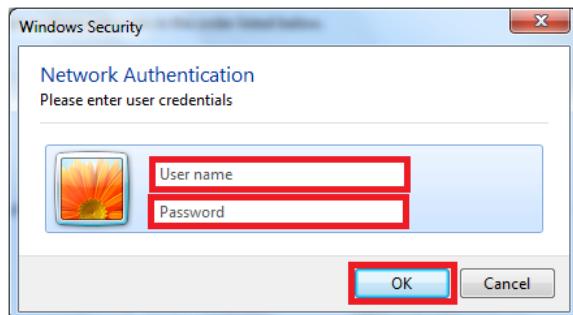
Select the Network Icon.



Find the “**lehman_college**” SSID in the list and click on it once.
Select “**Connect**”

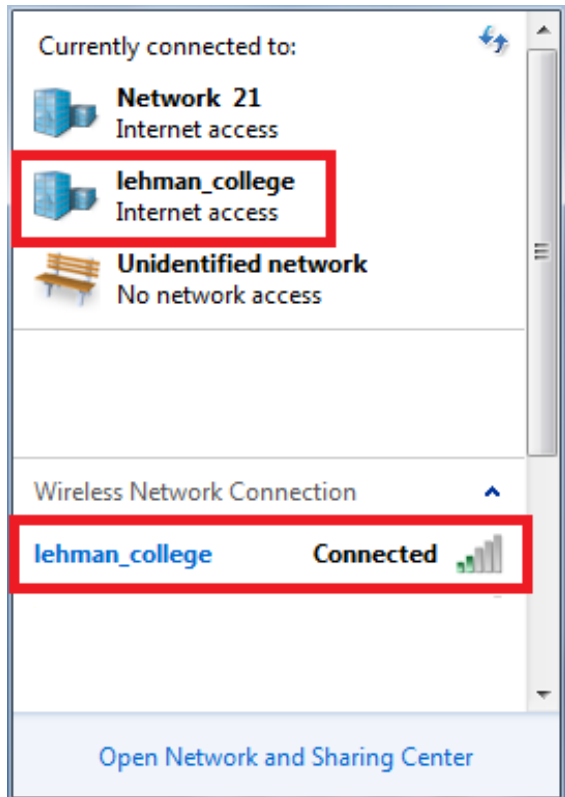
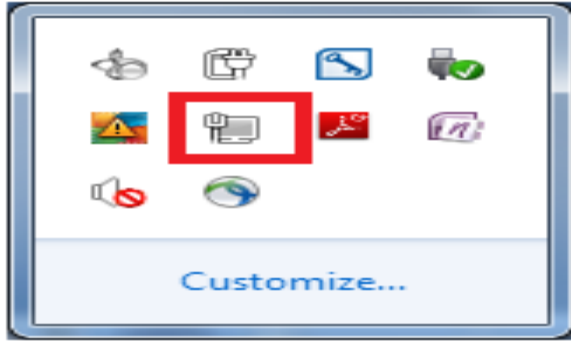


You will be prompted to enter your **Lehman Username and Password** and click “**OK**”



Verify you are connected to the lehman_college SSID

Select the **Network** Icon.



Should you have any questions, please feel free to contact the Help Desk by phone at (718) 960-1111, by email at help.desk@lehman.cuny.edu or Carman Hall in room 108.